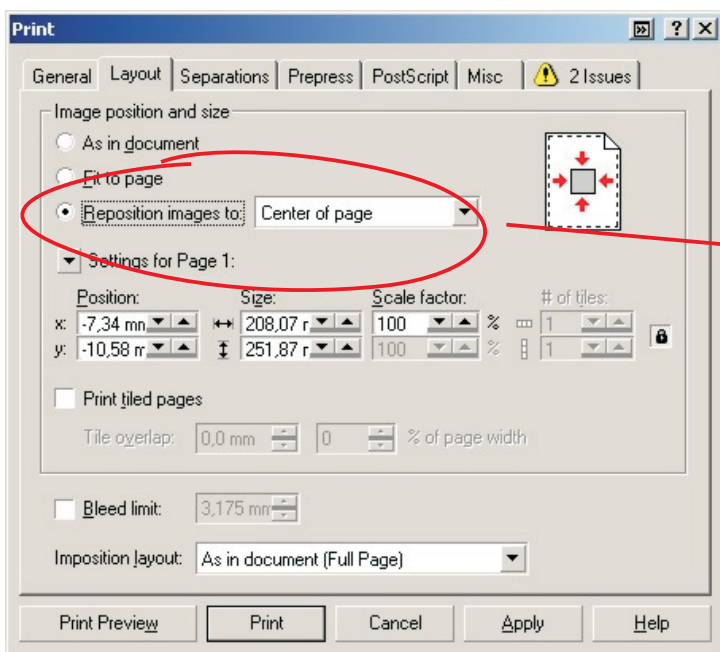
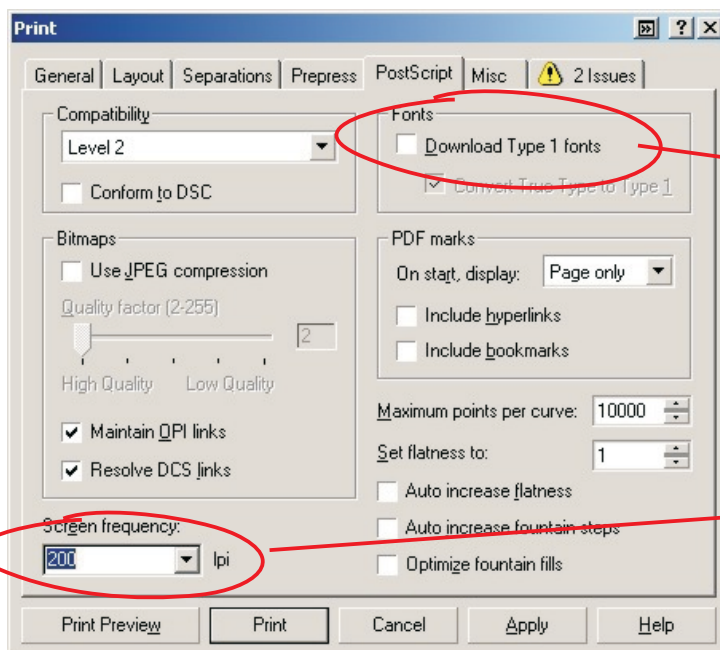


Izaberite printer OKI C9500(PS)

Uključite opciju Print to file

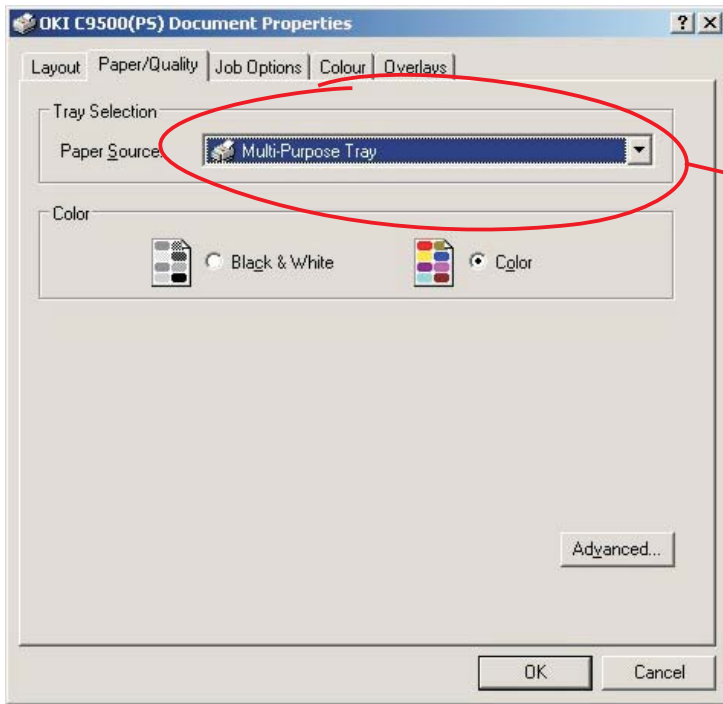


Uključite opciju
Reposition images to
Center of page

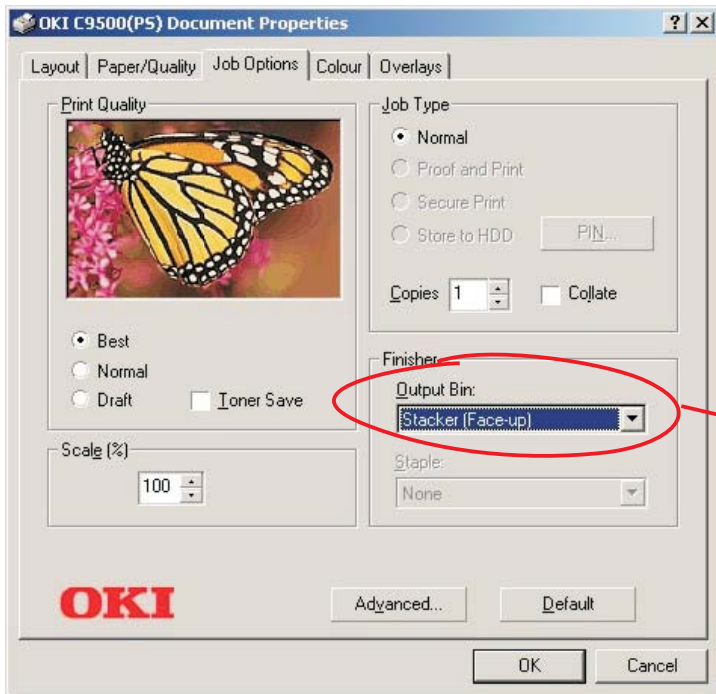


Isključite opciju Download fonts

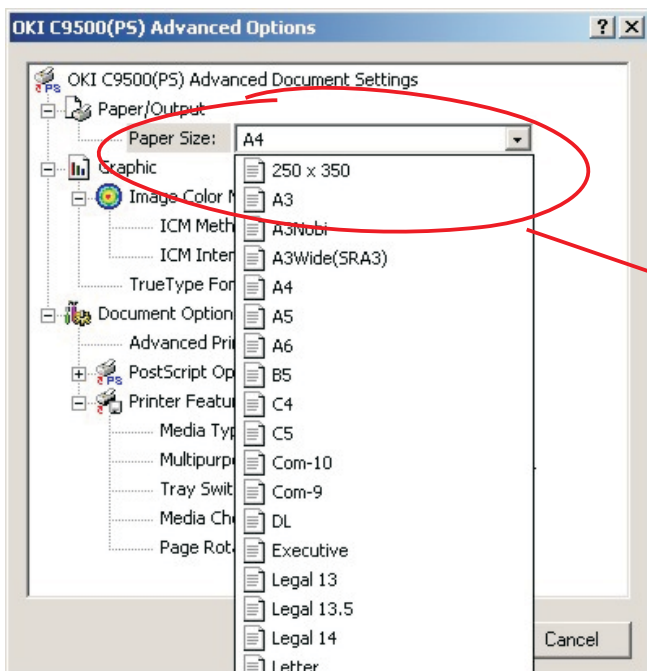
Screen frequency max. 200 lpi
(može ostati default)



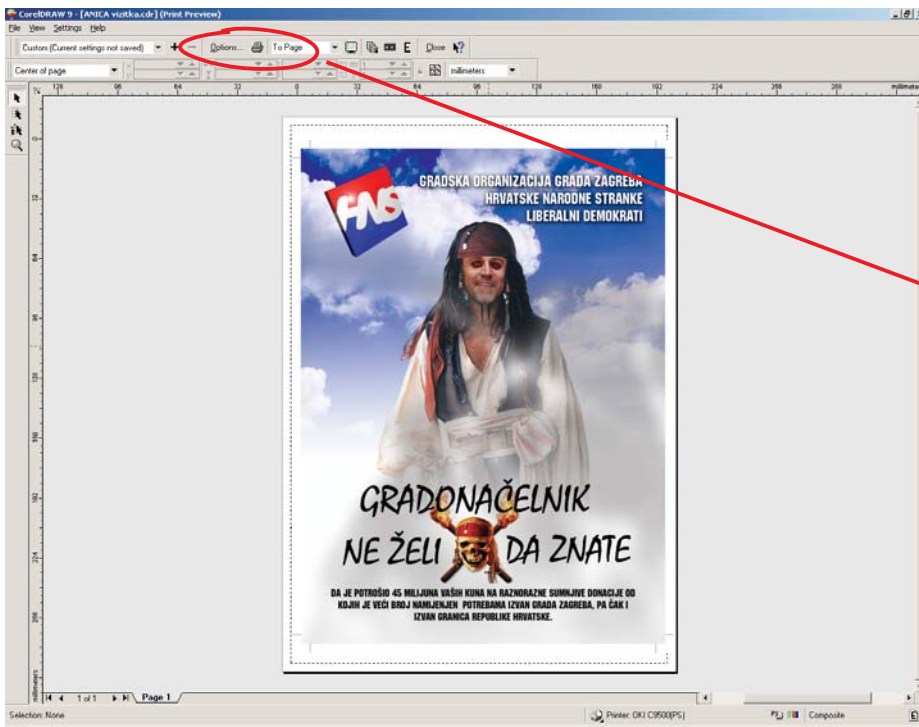
Na opciji General uđite na properties od printera. Kod Paper/Quality uključite Multi Purpose Tray.



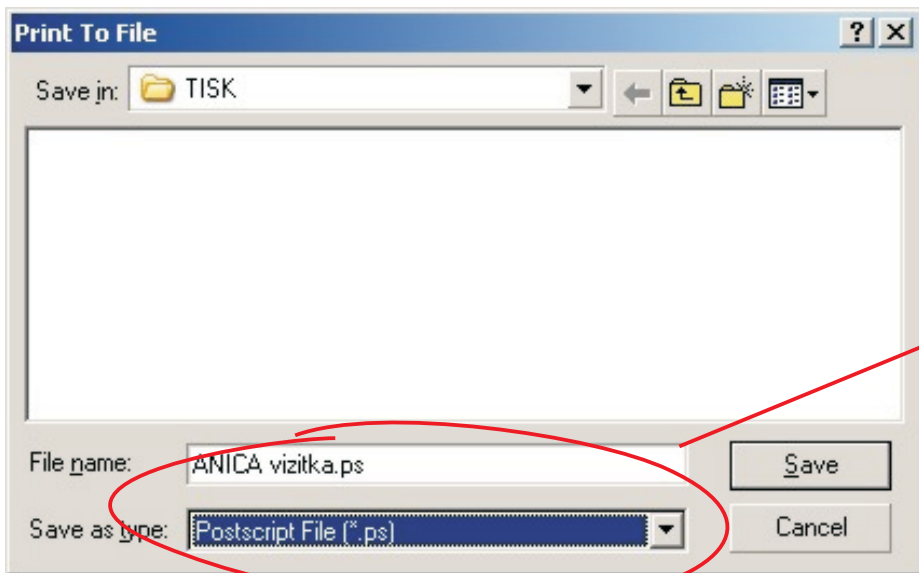
Na Job Options stavite Output Bin na Stacker (Face-up)



Na advanced opcijama odaberite veličinu papira (do 440 x 312 mm)



Pogledajte preview i ako je sve u redu kliknite na ikonu printera



Odaberite ps način upisa i stisnite Save