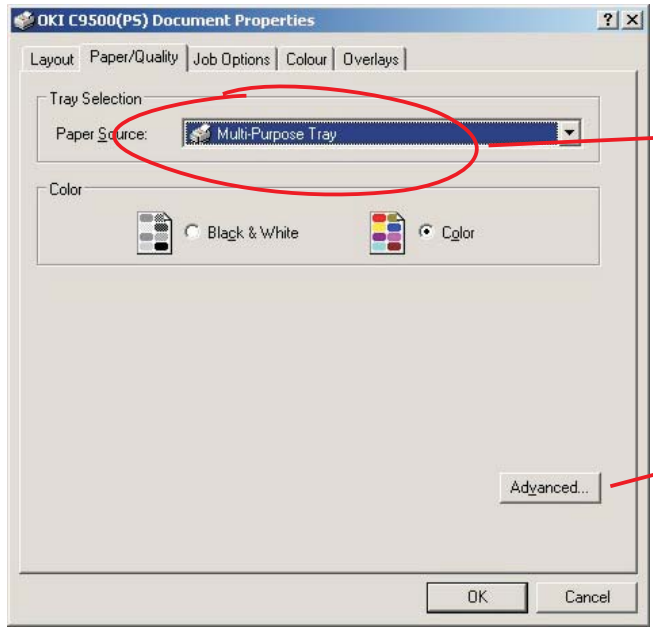


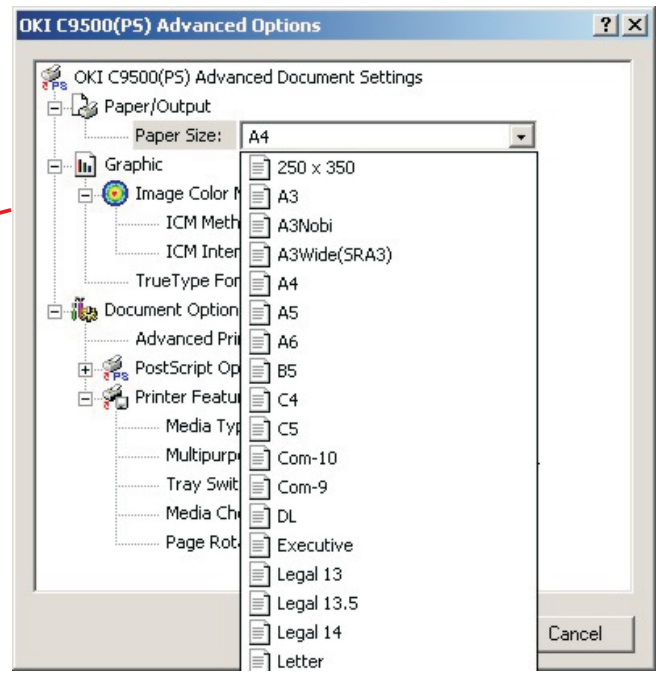
Izaberite printer OKI C9500(PS)

Uključeno Composite i Print to file

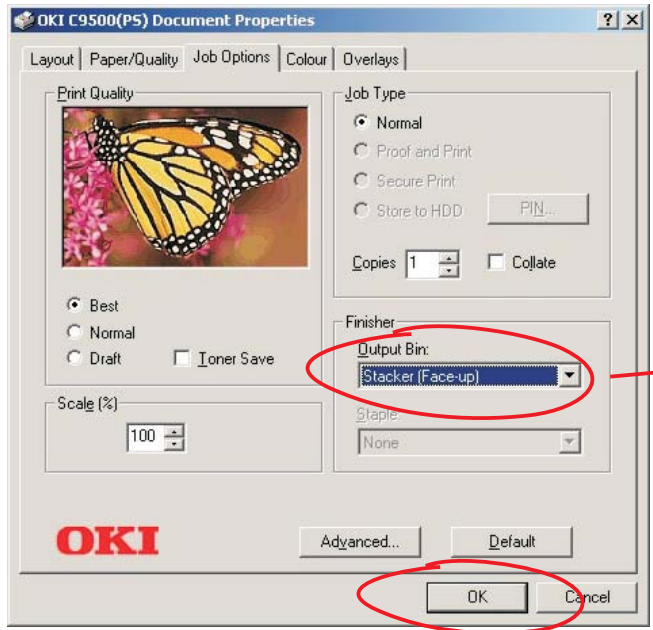
Nakon toga odaberite Properties...



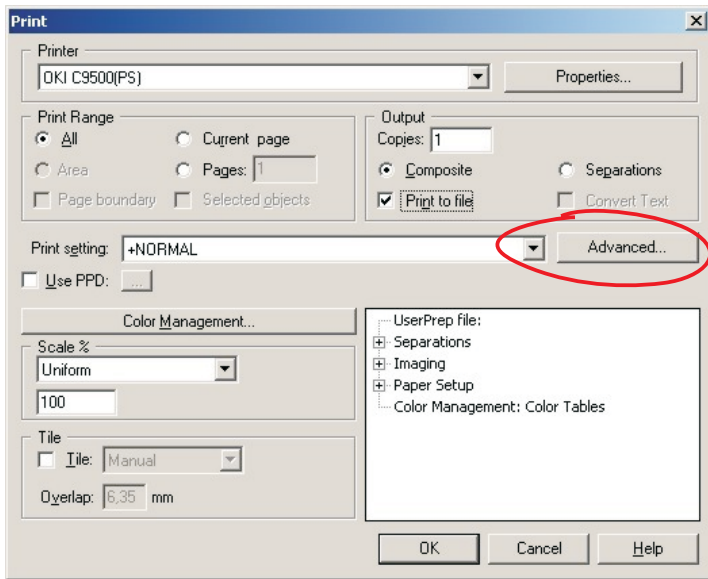
Na Paper/Quality uključite Multi Purpose Tray



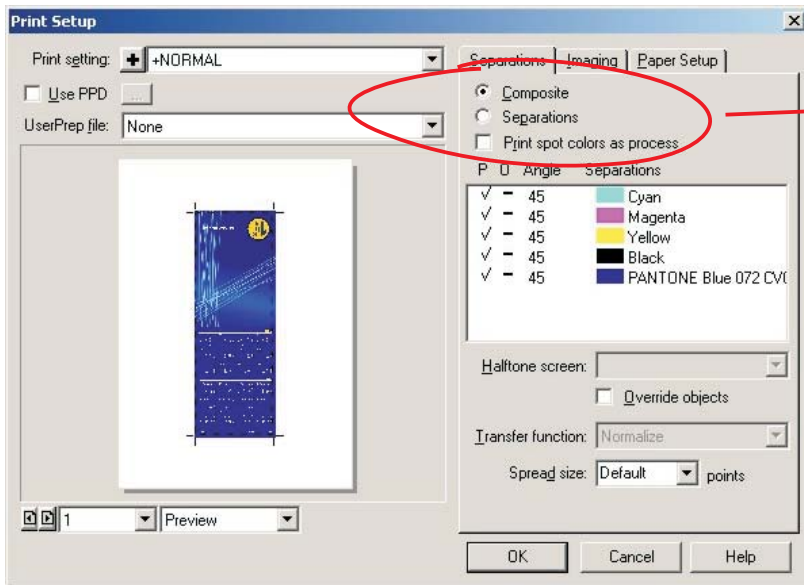
Odaberite veličinu papira max: 440 x 312 mm



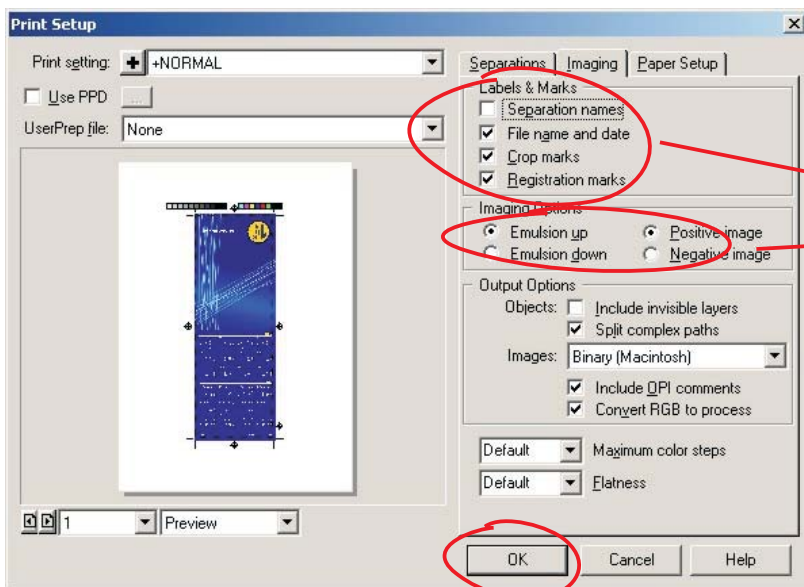
Na Job Options uključite Face Up



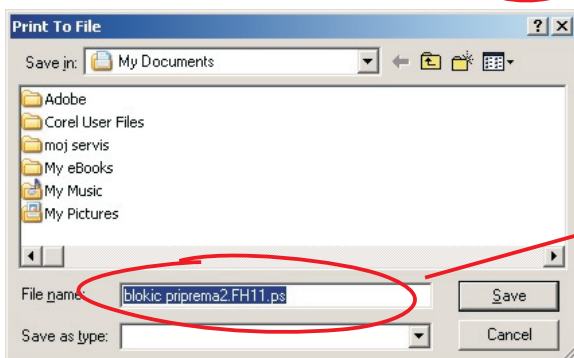
Uključite opciju Advanced



Da bi napravili probni otisak morate uključiti Composite



Podesite Setup kao na slici



Odaberite ime dokumenta i snimite