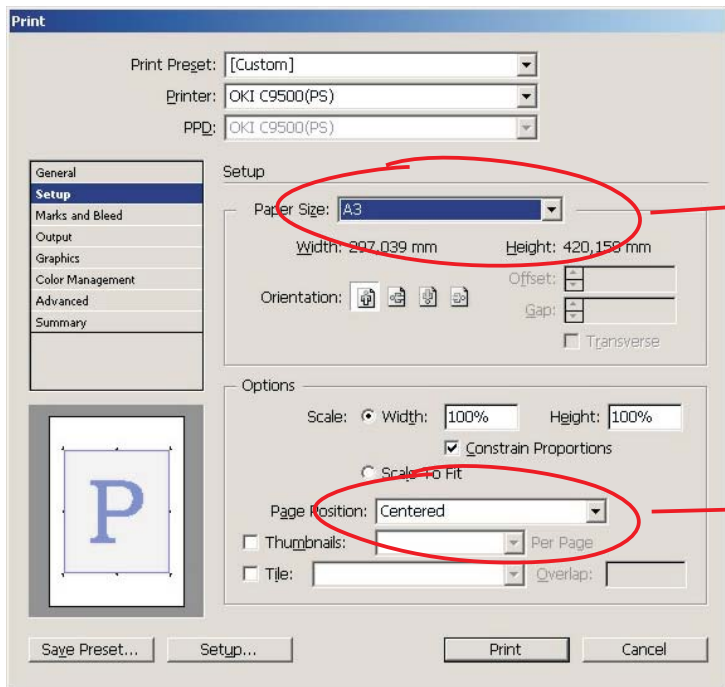
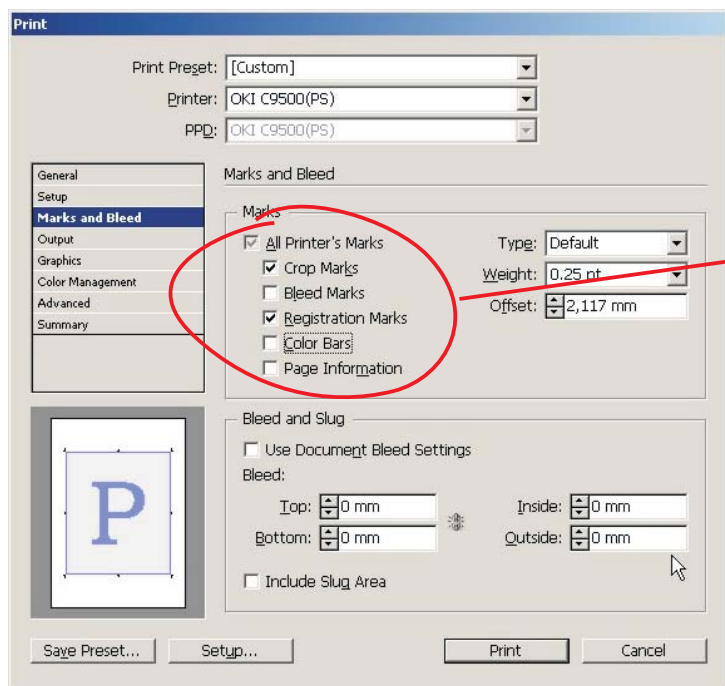


Izaberite printer OKI C9500(PS)

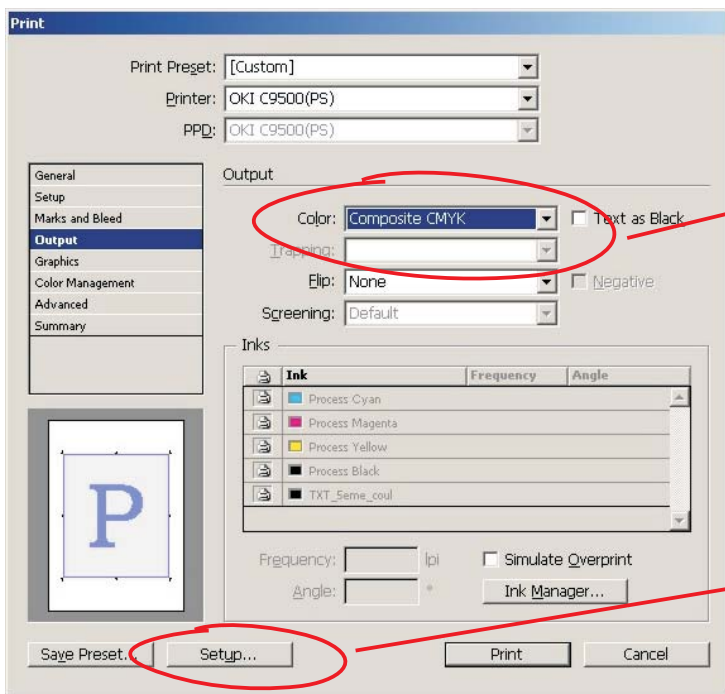


Odaberite veličinu papira
(max 440 x 312 mm)

Page position obavezno Center

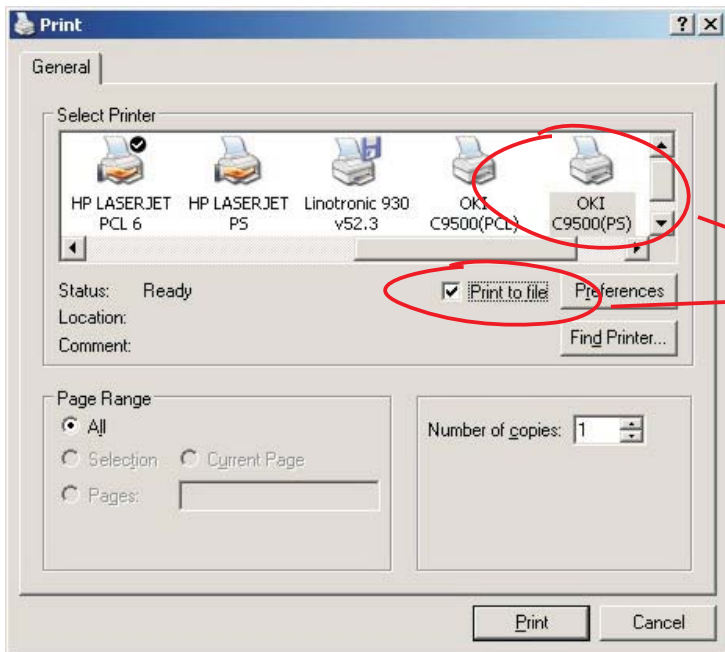


Uključite Crop Marks
i Registration Marks
Po potrebi uključite i Color Bars

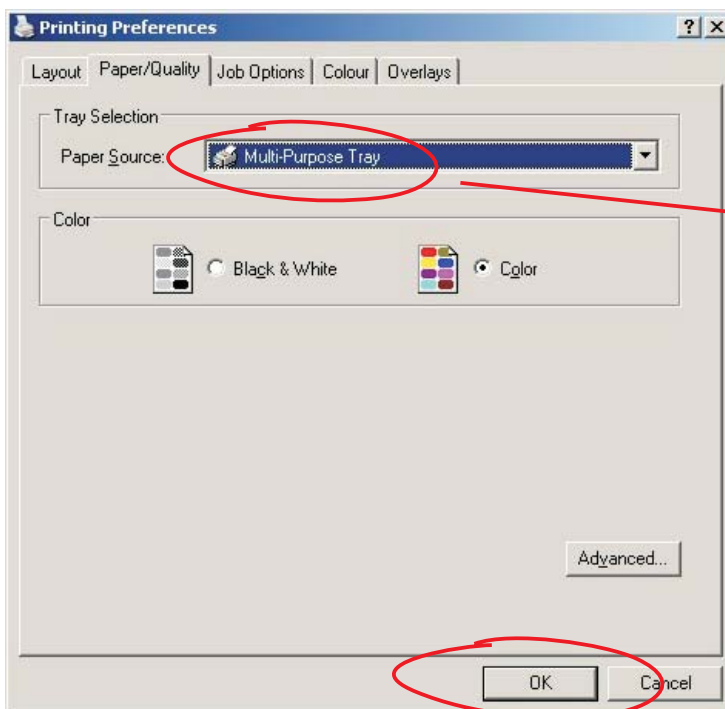


Da bi napravili probni otisak morate uključiti Color

Otvorite Setup

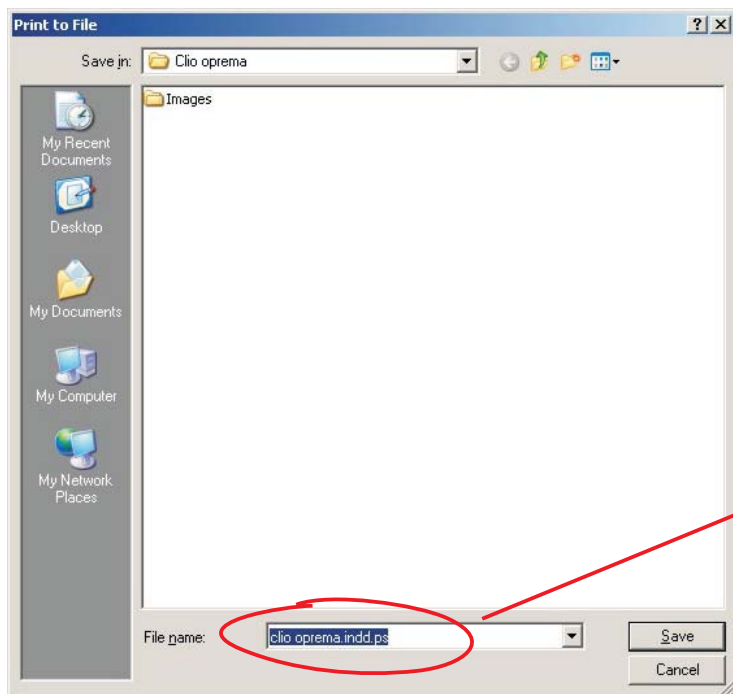


Podesite Setup kao na slici



Izaberite Multi Purpose Tray

Izaberite OK i kliknite na print



**Odaberite ps način upisa
odaberite ime i stisnite Save**